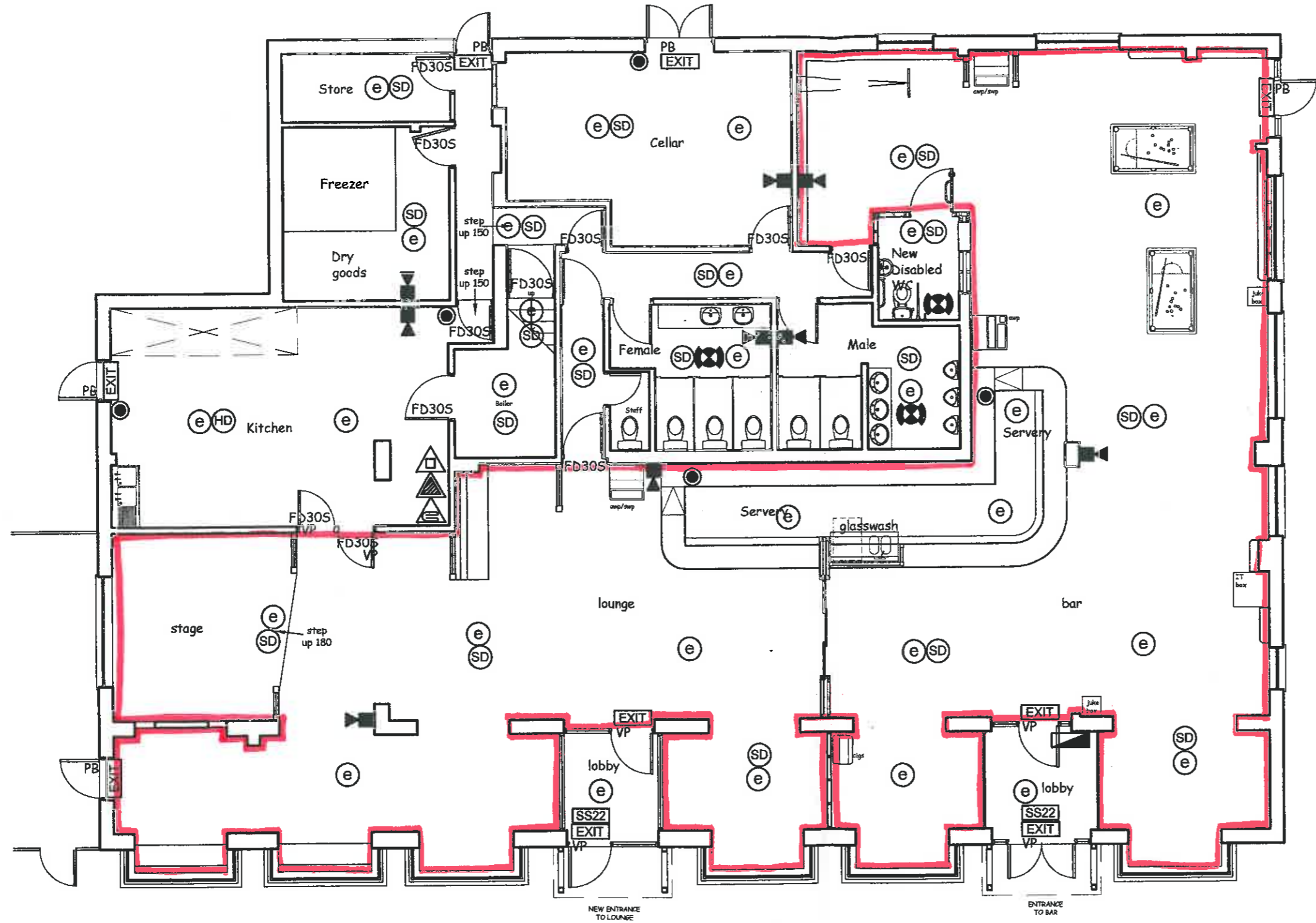


RECEIVED  
23 NOV 2005  
+11 2005/11/23



denotes 'Area of Licensable Activity'

E:
D:
C:
B:
A:

REVISION

**CREATIVE UNION**  
DESIGN CONSULTANTS

BRIDGE HOUSE • STATION ROAD • LICHFIELD  
• STAFFORDSHIRE • WS13 3 SHK  
TEL: 01543 258 600 FAX: 01543 258 611  
E-MAIL: DESIGN@CREATIVEUNION.NET  
WEB: WWW.CREATIVEUNION.NET

Client  
PUNCH TAVERNS

Job  
THE STARTING GATE  
SPEEN  
NEWBURY

Drawing Title  
PROPOSED PLAN - LICENSING

Date  
19.11.05

Scale  
1:100

DRAWN BY  
DK

JOB No  
584

DRG No  
584 : 32

This drawing is the property of Creative Union. Copyright is reserved by them and the drawing is issued on the condition that it is not copied, altered, sold or in part without the consent in writing of Creative Union. Figures dimensions to take preference over or than scales. All dimensions to be checked on site before commencement of any work or any drawings. This is to be read in conjunction with the specifications when existing.

fire precautions	key	description
		Area to covered by non-maintained emergency luminaire.(bs 5266)
		Area covered by heat detector (bs 5839).
		Area covered by smoke detector (bs 5839).
		Area covered by warning sounder at high level (bs 5839 - :Latest edition).

key	description
	Manual call point (bs 5839).
	Sign - Internally illuminated 'fire exit' or graphic equivalent - 75mm high letters (bs 5499).PB - push bar
	Fire Precautions Fire Alarm Panel
	area covered by visible warning indicator at high level

key	description
FD30S	30 min fire resistant doorset with intumescent strip, smoke seal & self closer.
FD60S	60 min fire resistant doorset with intumescent strip, smoke seal & self closer.
PB	Push bar or single action fastening to be available when the premises are in use
VP	Vision panel

key	description
	Main Entrance Doors to be securely pinned back during Trading hours.
	Fire extinguisher: water type.
	Fire extinguisher: dry powder.
	Fire extinguisher: carbon dioxide gas.
	Fire extinguisher: fire blanket.